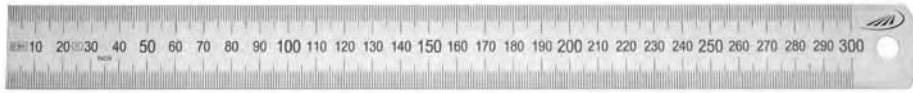




## 0460 Flexible steel rules



0460 204



0460 222



0460 242

### Model

- Stainless spring band steel
- EC grade II
- Rules with special graduations or other scales are available upon request

		Length mm	Cross-section mm	Order no.	List price EUR
<b>Scales: mm top and bottom</b>					
		150	13 x 0.5	0460 201	1.10
		200	13 x 0.5	0460 202	1.10
		300	15 x 0.5	0460 204	1.60
		500	20 x 0.5	0460 205	4.30
		1000	20 x 0.5	0460 206	9.20
		300	30 x 1.0	0460 207	3.20
		500	30 x 1.0	0460 208	7.70
		1000	30 x 1.0	0460 209	16.00
		1500	30 x 1.0	0460 210	25.80
		2000	30 x 1.0	0460 211	31.10
		3000	30 x 1.0	0460 212	72.00
	▪	3000	30 x 2.0	0460 213	111.00
<b>Scales: 1/2 mm top, mm bottom</b>					
		150	13 x 0.5	0460 221	1.10
		200	13 x 0.5	0460 222	1.10
		250	15 x 0.5	0460 223	1.60
		300	15 x 0.5	0460 224	1.60
		500	20 x 0.5	0460 225	4.30
		1000	20 x 0.5	0460 226	9.20
		300	30 x 1.0	0460 227	3.20
		500	30 x 1.0	0460 228	7.70
		1000	30 x 1.0	0460 229	16.00
		1500	30 x 1.0	0460 230	25.80
		2000	30 x 1.0	0460 231	31.10
		3000	30 x 1.0	0460 232	72.00
	▪	3000	30 x 2.0	0460 233	111.00
<b>Scales: 1/16", 1/32", 1/64" top; 1/2 mm, 1/1 mm bottom</b>					
		150	13 x 0.5	0460 241	1.10
		200	13 x 0.5	0460 242	1.10
		250	15 x 0.5	0460 243	1.60
		300	15 x 0.5	0460 244	1.60
		500	20 x 0.5	0460 245	4.30
		1000	20 x 0.5	0460 246	9.20
		300	30 x 1.0	0460 247	3.20
		500	30 x 1.0	0460 248	7.70
		1000	30 x 1.0	0460 249	16.00
		1500	30 x 1.0	0460 250	25.80
		2000	30 x 1.0	0460 251	31.10
		3000	30 x 1.0	0460 252	72.00
	▪	3000	30 x 2.0	0460 253	111.00





## 0460 Flexible steel rules, satin chrome



0460 502



0460 522

### Model

- Stainless spring band steel
- Scales satin chrome finished
- EC grade II

		Length mm	Cross-section mm	Order no.	List price EUR
<b>Scales: mm top and bottom</b>					
		150	13 x 0.5	0460 501	2.70
		200	13 x 0.5	0460 502	4.30
		300	15 x 0.5	0460 504	4.90
		500	20 x 0.5	0460 505	10.70
		1000	20 x 0.5	0460 506	21.80
		300	30 x 1.0	0460 507	5.60
		500	30 x 1.0	0460 508	11.80
		1000	30 x 1.0	0460 509	24.60
	▪	1500	35 x 1.5	0460 510	72.00
	▪	2000	35 x 1.5	0460 511	113.00
<b>Scales: 1/2 mm top, mm bottom</b>					
		150	13 x 0.5	0460 521	2.70
		200	13 x 0.5	0460 522	4.30
		300	15 x 0.5	0460 524	4.90
		500	20 x 0.5	0460 525	10.70
		1000	20 x 0.5	0460 526	21.80
		300	30 x 1.0	0460 527	5.60
		500	30 x 1.0	0460 528	11.80
		1000	30 x 1.0	0460 529	24.60

## 0453 Aluminium straight edges, anodized



0453 422

### Model

- Bevelled edge
- Non-glare mm graduation
- Factory standard

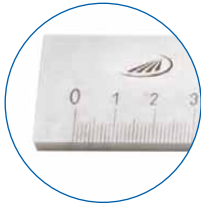
		Length mm	Cross-section mm	Order no.	List price EUR
		300	50 x 5	0453 422	8.90
		600	50 x 5	0453 430	13.20
		1000	50 x 5	0453 434	19.50



## 0451 Graduated straight rules acc. to DIN 866, type A



DIN  
866-A




### Model

- Both-sided 10 mm protective ends
- mm graduated scale

### Delivery

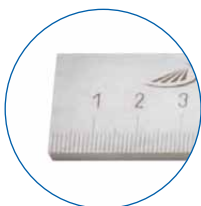
- Cardboard box
- From 2000 mm in transportation box

	Length mm	Cross-section mm	Order no.	List price EUR
<b>Special steel</b>				
	500	30 x 6	0451 101	25.80
	1000	40 x 8	0451 102	59.00
▪	1500	40 x 8	0451 103	106.00
▪	2000	50 x 10	0451 104	147.00
▪	3000	50 x 10	0451 105	304.00
▪	4000	60 x 12	0451 106	552.00
<b>Stainless steel</b>				
	500	30 x 6	0451 201	45.70
	1000	40 x 8	0451 202	105.00
▪	1500	40 x 8	0451 203	156.00
▪	2000	50 x 10	0451 204	274.00
▪	3000	50 x 10	0451 205	552.00
▪	4000	60 x 12	0451 206	998.00

## 0452 Graduated straight rules acc. to DIN 866, type B



DIN  
866-B




### Model

- Graduated scale begins directly on the end of rule, the other end has a 10 mm protective end
- mm graduated scale

### Delivery

- Cardboard box
- From 2000 mm in transportation box

	Length mm	Cross-section mm	Order no.	List price EUR
<b>Special steel</b>				
	500	25 x 5	0452 101	20.30
	1000	30 x 6	0452 103	40.10
▪	1500	30 x 6	0452 104	58.00
▪	2000	40 x 8	0452 105	95.00
▪	2500	40 x 8	0452 106	150.00
▪	3000	40 x 8	0452 107	166.00
▪	4000	50 x 10	0452 108	317.00
▪	5000	60 x 12	0452 109	570.00
<b>Stainless steel</b>				
	500	25 x 5	0452 201	27.10
	1000	30 x 6	0452 203	59.00
▪	1500	30 x 6	0452 204	101.00
▪	2000	40 x 8	0452 205	160.00
▪	2500	40 x 8	0452 206	306.00
▪	3000	40 x 8	0452 207	318.00
▪	4000	50 x 10	0452 208	572.00
▪	5000	60 x 12	0452 209	1090.00





## 0458 Steel scale tapes for circumference and diameter



0458 104



0458 102

### Model

- Factory standard
- Vernier 0.1 mm
- Main scale graduation 1 mm

### Delivery

- Cardboard box

For circumference mm	For dia. mm	Order no.	List price EUR
<b>Spring band steel</b>			
60 - 950	20 - 300	0458 102	38.30
940 - 2200	300 - 700	0458 103	45.70
2190 - 3460	700 - 1100	0458 104	59.00
3450 - 4720	1100 - 1500	0458 105	71.00
4710 - 5980	1500 - 1900	0458 106	85.00
5960 - 7230	1900 - 2300	0458 107	98.00
7220 - 8500	2300 - 2700	0458 108	242.00
8480 - 9760	2700 - 3100	0458 109	259.00
9730 - 11010	3100 - 3500	0458 110	333.00
11000 - 12260	3500 - 3900	0458 111	511.00
12250 - 13500	3900 - 4300	0458 112	521.00
13500 - 14760	4300 - 4700	0458 113	531.00
<b>Stainless spring band steel</b>			
60 - 950	20 - 300	0458 202	68.00
940 - 2200	300 - 700	0458 203	86.00
2190 - 3460	700 - 1100	0458 204	105.00
3450 - 4720	1100 - 1500	0458 205	139.00
4710 - 5980	1500 - 1900	0458 206	168.00



## 0454 Straight edges, with bevelled edge



### Model

- Special steel
- Zinc coated
- Factory standard

### Delivery

- Cardboard box
- From 2000 mm in transportation box

☒ ☒	☒	Length mm	Cross-section mm	Order no.	List price EUR
		400	40 x 5	0454 424	9.40
		500	40 x 5	0454 428	11.70
	▪	1000	40 x 5	0454 434	23.20
	▪	1500	40 x 5	0454 438	42.20
	▪	2000	40 x 5	0454 440	64.00
	▪	3000	50 x 8	0454 444	169.00

## 0455 Straight edges with bevelled edge, mm graduation



### Model

- Special steel
- Zinc coated
- Factory standard
- Graduated scale begins directly on the end of rule, the other end has a 10 mm protective end

### Delivery

- Cardboard box
- From 2000 mm in transportation box

☒ ☒	☒	Length mm	Cross-section mm	Order no.	List price EUR
		400	40 x 5	0455 424	17.30
		500	40 x 5	0455 428	21.60
	▪	1000	40 x 5	0455 434	41.00
	▪	1500	40 x 5	0455 438	73.00
	▪	2000	40 x 5	0455 440	107.00
	▪	3000	50 x 8	0455 444	226.00





## 0464 Steel rules made of special steel, accuracy grade 0



rectangular cross section



I shaped cross section, 2 hand slots

### Model

- Special steel
- Measuring surfaces are finely grinded
- Flatness of measuring surfaces according to DIN 874

### Delivery

- Cardboard box
- From 2000 mm in transportation box

		Length mm	Cross-section mm	Order no.	List price EUR
<b>Special steel, rectangular cross section</b>					
		500	50 x 10	0464 101	66.00
		750	50 x 10	0464 102	94.00
		1000	60 x 12	0464 103	147.00
	▪	1500	70 x 15	0464 104	248.00
<b>Special steel, I shaped cross section, 2 hand slots</b>					
	▪	2000	80 x 15	0464 105	445.00
	▪	2500	100 x 16	0464 106	756.00
	▪	3000	120 x 20	0464 107	1161.00
	▪	4000	140 x 20	0464 108	1995.00

## 0465 Steel rules made of special steel, accuracy grade 1



		Length mm	Cross-section mm	Order no.	List price EUR
<b>Special steel, rectangular cross section</b>					
		500	40 x 8	0465 101	32.30
		750	50 x 10	0465 102	53.00
		1000	50 x 10	0465 103	72.00
	▪	1500	60 x 12	0465 104	132.00
<b>Special steel, I shaped cross section, 2 hand slots</b>					
	▪	2000	70 x 15	0465 105	268.00
	▪	2500	80 x 15	0465 106	502.00
	▪	3000	100 x 16	0465 107	862.00
	▪	4000	120 x 20	0465 108	1393.00

## 0466 Steel rules made of special steel, accuracy grade 2



		Length mm	Cross-section mm	Order no.	List price EUR
<b>Special steel, rectangular cross section</b>					
		500	30 x 6	0466 101	22.20
		750	40 x 8	0466 102	39.00
		1000	40 x 8	0466 103	44.40
	▪	1500	50 x 10	0466 104	85.00
	▪	2000	60 x 12	0466 105	116.00
	▪	2500	70 x 15	0466 106	256.00
	▪	3000	80 x 15	0466 107	400.00
<b>Special steel, I shaped cross section, 2 hand slots</b>					
	▪	4000	100 x 16	0466 108	951.00



## 0464 Steel rules made of stainless steel, accuracy grade 0



rectangular cross section



I shaped cross section, 2 hand slots



### Model

- Special steel
- Measuring surfaces are finely grinded
- Flatness of measuring surfaces according to DIN 874

### Delivery

- Cardboard box
- From 2000 mm in transportation box

✂	☒	Length mm	Cross-section mm	Order no.	List price EUR
<b>Stainless steel, rectangular cross section</b>					
		500	50 x 10	0464 201	104.00
		750	50 x 10	0464 202	142.00
		1000	60 x 12	0464 203	268.00
	▪	1500	70 x 15	0464 204	445.00
<b>Stainless steel, I shaped cross section, 2 hand slots</b>					
	▪	2000	80 x 15	0464 205	823.00
	▪	2500	100 x 16	0464 206	1433.00
	▪	3000	120 x 18	0464 207	2534.00
	▪	4000	140 x 20	0464 208	4520.00

## 0465 Steel rules made of stainless steel, accuracy grade 1



✂	☒	Length mm	Cross-section mm	Order no.	List price EUR
<b>Stainless steel, rectangular cross section</b>					
		500	40 x 8	0465 201	59.00
		750	50 x 10	0465 202	91.00
		1000	50 x 10	0465 203	164.00
	▪	1500	60 x 12	0465 204	256.00
<b>Stainless steel, I shaped cross section, 2 hand slots</b>					
	▪	2000	70 x 15	0465 205	604.00
	▪	2500	80 x 15	0465 206	920.00
	▪	3000	100 x 16	0465 207	1772.00
	▪	4000	120 x 18	0465 208	2610.00

## 0466 Steel rules made of stainless steel, accuracy grade 2



✂	☒	Length mm	Cross-section mm	Order no.	List price EUR
<b>Stainless steel, rectangular cross section</b>					
		500	30 x 6	0466 201	38.30
		750	40 x 8	0466 202	67.00
		1000	40 x 8	0466 203	98.00
	▪	1500	50 x 10	0466 204	204.00
	▪	2000	60 x 12	0466 205	344.00
	▪	2500	70 x 15	0466 206	572.00
	▪	3000	80 x 15	0466 207	817.00
<b>Stainless steel, I shaped cross section. 2 hand slots</b>					
	▪	4000	100 x 16	0466 208	1521.00

